

MODEL MPRV-L PRESSURE REDUCING REGULATOR

SECTION I

I. DESCRIPTION AND SCOPE

Model MPRV-L is a pressure reducing regulator used to control downstream (outlet or P_2) pressure. Available in bronze construction with brass and stainless steel trim, 1/4" & 3/8" (DN8 & DN10) FNPT connections. Suitable for liquid and gaseous service. Refer to Technical Bulletin MPRV-L-TB for specific design conditions and selection recommendations.

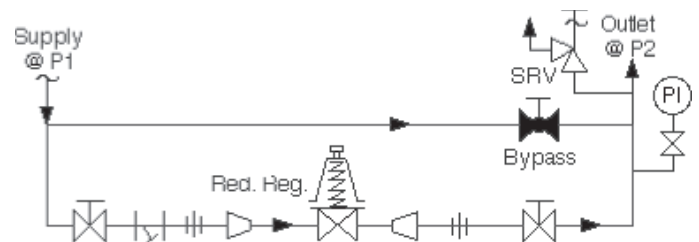
SECTION II

II. INSTALLATION



CAUTION

Installation of adequate overpressure protection is recommended to protect the regulator from overpressure and all downstream equipment from damage in the event of regulator failure.



Recommended Piping Schematic
For Pressure Reducing Station

1. An inlet block valve should always be installed.
2. If service application is continuous such that shutdown is not readily accomplished, it is recommended that an inlet block valve, outlet block valve, and a manual bypass valve be installed.
3. Pipe unions should be installed to allow removal from piping.
4. An outlet pressure gauge should be located approximately ten pipe diameters downstream, and within sight.
5. All installations should include a downstream relief device if the inlet pressure could exceed the pressure rating of any downstream equipment or the maximum outlet pressure rating of the unit.
6. Clean piping of all foreign material including chips, welding scale, oil, grease and dirt before installing the regulator. Strainers are recommended.
7. In placing thread sealant on pipe ends prior to engagement, ensure that excess material is removed and not allowed to enter regulator upon startup.
8. Flow Direction: Install so the flow direction matches the arrow cast on the main regulator body.
9. For best performance, install in well drained horizontal pipe.
- 10A. Basic Regulator - Regulator may be rotated around the pipe axis 360°. Recommended position is with spring chamber vertical upwards. Orient such that the spring chamber vent hole does not collect rainwater.
- 10B. Cryogenic Regulator - Option -5 - Recommended installation is with spring chamber hanging directly below the body in a vertical downwards orientation. Allows water to drain; etc.
11. Regulators are not to be buried underground.
12. For insulated piping systems, recommendation is to not insulate regulator.

SECTION III

III. PRINCIPLE OF OPERATION

1. Movement occurs as pressure variations register on the diaphragm. The registering pressure is the outlet, P_2 , or downstream pressure. The range spring opposes diaphragm movement. As

outlet pressure drops, the range spring pushes the diaphragm down, opening the port; as outlet pressure increases, the diaphragm pushes up and the port opening closes.

2. A complete diaphragm failure will cause the regulator to fail open.

SECTION IV

IV. STARTUP

CAUTION

The maximum outlet pressure is listed on the nameplate as the upper range spring pressure level, and is the recommended "upper operative limit" for the sensing diaphragm (See Section IV. Startup, Step 7). Higher pressures could damage the diaphragm. (Field hydrostatic tests frequently destroy diaphragms. DO NOT HYDROSTATIC TEST THROUGH AN INSTALLED UNIT; ISOLATE FROM TEST.)

1. Start with the block valves closed. A bypass valve may be used to maintain outlet pressure in the downstream system without changing the following steps.
2. Relax the range spring by turning the adjusting screw counter clockwise (CCW) a minimum of three (3) full revolutions. This reduces the outlet (downstream) pressure set point.
3. If it is a "hot" piping system, and equipped with a bypass valve, slowly open the bypass valve to preheat the system piping and to allow slow expansion of the piping. Closely monitor outlet (downstream) pressure via gauge to ensure not over-pressurizing. **NOTE:** *If no bypass valve is installed, extra caution should be used in starting up a cold system; i.e. do everything slowly.*
4. Crack open the outlet (downstream) block valve.
5. Slowly open the inlet (upstream) block valve observing the outlet (downstream) pressure

gauge. Determine if the regulator is flowing. If not, slowly rotate the regulator adjusting screw clockwise (CW) until flow begins.

6. Continue to slowly open the inlet (upstream) block valve until fully open.
7. Continue to slowly open the outlet (downstream) block valve, especially when the downstream piping system isn't pressurized. If the outlet (downstream) pressure exceeds the desired pressure, close the block valve and go to Step 2, then return to Step 4.
8. When flow is established steady enough that the outlet (downstream) block valve is fully open, begin to slowly close the bypass valve if installed.
9. Develop system flow to a level near its expected normal rate, and reset the regulator set point by turning the adjusting screw CW to increase outlet pressure, or CCW to reduce outlet pressure.
10. Reduce system flow to a minimum level and observe set point. Outlet pressure will rise from the set point of Step 9. The maximum rise in outlet pressure on decreasing flow should not exceed the stated upper limit of the range spring by greater than 10%; i.e. 20-80 psig (1.38-5.52 Barg) range spring. (Example: at low flow the outlet pressure should not exceed 88 psig (6.07 barg), if it does, consult factory).

SECTION V

V. SHUTDOWN

1. On systems with a bypass valve, and where system pressure is to be maintained as the regulator is shut down, slowly open the bypass valve while closing the inlet (upstream) block valve. Fully close the inlet (upstream) block valve. (When on bypass, the system pressure must be constantly observed and manually regulated. Close the outlet (downstream) block valve.

CAUTION

Do not walk away and leave a bypassed regulator unattended.

2. If the regulator and system are to both be shut down, slowly close the inlet (upstream) block valve. Close the outlet (downstream) valve only if regulator removal is required.

SECTION VI

VI. MAINTENANCE



WARNING

SYSTEM UNDER PRESSURE. Prior to performing any maintenance, isolate the regulator from the system and relieve all pressure. Failure to do so could result in personal injury.

A. General:

1. Maintenance procedures hereinafter are based upon removal of the regulator unit from the pipeline where installed.
2. Owner should refer to owner's procedures for removal, handling, cleaning and disposal of nonreusable parts, i.e. gaskets, etc.
3. Refer to Figure 1 for view of basic unit and item number listing of parts.

B. Diaphragm Replacement:

1. Secure body cap (15) in a vise with the spring chamber (2) oriented upwards.



CAUTION

To prevent damage to body cap, use soft jaws when securing the body in a vise.

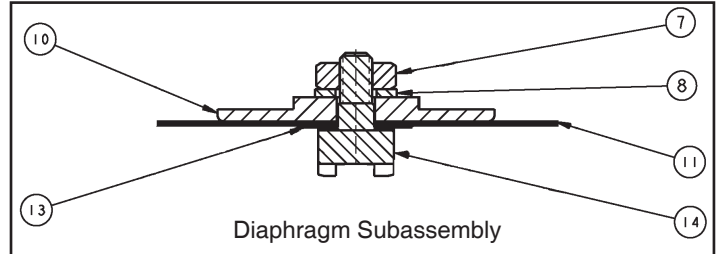


WARNING

SPRING UNDER COMPRESSION. Prior to removing the spring chamber, relieve spring compression by backing out the adjusting screw. Failure to do so may result in flying parts that could cause personal injury.

2. Relax range spring (6) by turning adjusting screw (3) CCW until removed from spring chamber (2).
3. Loosen spring chamber (2) by placing wrench on "flats" and rotating CCW.
4. Remove spring chamber, spring button (5), range spring (6) and diaphragm stop (9).
5. Remove the diaphragm subassembly consisting of the pressure plate nut (7), lock washer (8), pressure plate (10), diaphragm (s) (11), gasket (13) and pusher plate (14).
NOTE the quantity of diaphragms (11) incorporated in the assembly. Depending on outlet pressure level, multiple metal diaphragms may be "stacked".

6. Using the "flats" on the pusher plate (14) secure the pusher plate in a soft jawed vice. Rotate pressure plate nut (7) CCW to loosen and remove nut, lock washer (8), pressure plate (10), diaphragm(s) (11) and gasket (13). (If a composition diaphragm is used there is no gasket (13)).



7. Inspect pressure plate (10) to ensure no deformation due to over-pressurization. If deformed, replace.
8. Remove diaphragm gasket (12).
9. Clean body (1) diaphragm flange surface. **Do not scratch diaphragm gasket seating surface.**
NOTE: If regulator was originally supplied with Option -5, maintenance must include a level of cleanliness equal to Cashco's cleaning standard #S-1134. Contact factory for details.
10. Reassemble diaphragm subassembly by placing gasket (13), diaphragm(s)(11), pressure plate (10) and lock washer (8) over the threaded post. Assure the pressure plate is placed with curved outer rim down next to the diaphragm (11) surface. Place a thread sealant compound on the threads of the pusher plate (14) prior to tightening the pressure plate nut (7) to the following values:

Diaphragm	Torque	
	In-lbs	(N-m)
Metal	50	(5.6)
Composition	15	(1.7)

11. Place diaphragm gasket (12) into body (1) recess. Place diaphragm subassembly on top of gasket, nut side up.
12. Place diaphragm stop (9) and range spring (6) over the pressure plate nut (7) of the diaphragm subassembly.
13. Apply Christolube or equivalent into depression of spring button (5) where adjusting screw (3) makes contact. Set spring button on top of range spring (6); ensure spring button is laying flat on top of spring.

14. Rotate the spring chamber (2) CW by hand into the threaded portion of the body (1) ensuring not to cross thread. Continue rotating CW until firmly seated against the upper diaphragm gasket (12). Tighten to 30-35 ft-lbs (41-47 N-m) torque.
15. Apply Christolube or equivalent to threads of adjusting screw (3) and install adjusting screw with locknut (4) into the spring chamber (2).

C. Trim Replacement:

1. Trim inspection requires that the diaphragm subassembly be removed. Refer to Section VI.B. Steps 1-9.
2. To remove piston assembly, secure body (1) in a vise with the body cap (15) oriented upwards.

9. Apply Formula 8 thread sealant to the body cap (15) male threads. Carefully position the body cap over the piston spring and engage the threads. **NOTE:** *While engaging the threads - may encounter minimum resistance from upward force of the piston spring. With hand pressure continue to press body cap down evenly until threads are engaged. Tighten to 30-35 ft.lbs. (41-47 N-m). These two parts seal metal-to-metal with no gasket.*
10. Re-orient body assembly in vise and secure by the body cap, (body cap oriented down).
11. Reinstall diaphragm subassembly, spring, etc. per Section VI.B. Steps 10-15.



CAUTION

To prevent damage to the body, use soft jaws when securing body in a vise. Position body so that vise does not close over the inlet and the outlet connections.

3. Rotate body cap (15) CCW to remove from body.
4. Remove piston spring (17), piston assembly (16) and u-cup seal (18). Inspect TFE seating surface on the piston assembly. **NOTE:** *The piston assembly can not be dis-assembled. If the TFE seat is damaged, replace the entire piston assembly.*
5. Clean body (1) cavity and all parts to be reused. **NOTE:** *If regulator was originally supplied with Option -5, maintenance must include a level of cleanliness equal to Cashco's cleaning standard #S-1134. Contact factory for details.*
6. To re-install trim, slide new u-cup seal (18) (open end of cup facing up) into recess in body.
7. Slide the piston assembly into the body, TFE seat end in first. **NOTE:** *Piston should move freely up and down within the body cavity.*
8. Center the piston spring (17) on top of the piston.

SECTION VII

VII. TROUBLE SHOOTING GUIDE

1. Erratic operation; chattering.

Possible Causes	Remedies
A. Oversized regulator; inadequate rangeability.	A1. Check actual flow conditions, re-size regulator for minimum and maximum flow. A2. Increase flow rate. A3. Decrease regulator pressure drop; decrease inlet pressure by placing a throttling orifice in inlet piping union. A4. Install next step higher range spring. Contact factory. A5. Before replacing regulator, contact factory.
B. Worn piston; inadequate guiding.	B. Replace trim (possible body replacement).
C. Weakened/broken piston spring.	C. Replace piston spring. Determine if corrosion is causing the failure.

2. Regulator can't pass sufficient flow.

Possible Causes	Remedies
A. Regulator undersized.	A1. Confirm by opening bypass valve together with regulator. A2. Check actual flow conditions, re-size regulator; if regulator has inadequate capacity, replace with larger unit.
B. Incorrect range spring (screwing in CW of adjusting screw does not allow bringing pressure level up to proper level).	B. Replace range spring with proper higher range. Contact factory.
C. Too much droop.	C1. Review droop expected. C2. Contact factory.

3. Leakage through the spring chamber vent hole.

Possible Causes	Remedies
A. Normal-life diaphragm failure.	A. Replace diaphragm.
B. Abnormal short-life diaphragm failure.	B1. Can be caused by excessive chattering. See No. 1. to remedy chatter. B2. Can be caused by corrosive action. Consider alternate diaphragm material. B3. For composition diaphragms, ensure not subjecting to over-temperature conditions. B4. Downstream (outlet) pressure buildup occurring that overstresses diaphragms. Relocate regulator or protect with safety relief valve.

4. Excessive pressure downstream.

Possible Causes	Remedies
A. Regulator not closing tightly.	A. Inspect the seating. Clean composition seats, - are depressed, nicked or embedded with debris, replace trim.
B. Downstream block.	B. Check system; isolate (block) flow at regulator inlet - not outlet. Relocate regulator if necessary.
C. No pressure relief protection.	C. Install safety relief valve, or rupture disc.
D. Restricted diaphragm movement.	D. Ensure no moisture in spring chamber at temperatures below freeze point. Ensure no dust or debris entering vent opening. If rainwater or debris can enter, reorient regulator.

SECTION VIII

VIII. ORDERING INFORMATION NEW REPLACEMENT UNIT vs PARTS "KIT" FOR FIELD REPAIR

To obtain a quotation or place an order, please retrieve the Serial Number and Product Code that was stamped on the metal name plate and attached to the unit. This information can also be found on the Bill of Material ("BOM") that was provided when unit was originally shipped. (Serial Number typically 6 digits). Product Code typical format as follows: (last digit is alpha character that reflects revision level for the product).

□□□□ - □□□□ 7 - □□□□□□□□□□□□

NEW REPLACEMENT UNIT:

Contact your local Cashco, Inc., Sales Representative with the Serial Number and Product code. With this information they can provide a quotation for a new unit including a complete description, price and availability.

PARTS "KIT" for FIELD REPAIR:

Contact your local Cashco, Inc., Sales Representative with the Serial Number and Product code. Identify the parts and the quantity required to repair the unit from the "BOM" sheet that was provided when unit was originally shipped.

NOTE: *Those part numbers that have a quantity indicated under "Spare Parts" in column "A" reflect minimum parts required for inspection and rebuild, - "Soft Goods Kit". Those in column "B" include minimum trim replacement parts needed plus those "Soft Goods" parts from column "A".*

If the "BOM" is not available, refer to the cross-sectional drawings included in this manual for part identification and selection.

A Local Sales Representative will provide quotation for appropriate Kit Number, Price and Availability.



CAUTION

Do not attempt to alter the original construction of any unit without assistance and approval from the factory. All purposed changes will require a new name plate with appropriate ratings and new product code to accommodate the recommended part(s) changes.

The contents of this publication are presented for informational purposes only, and while every effort has been made to ensure their accuracy, they are not to be construed as warranties or guarantees, express or implied, regarding the products or services described herein or their use or applicability. We reserve the right to modify or improve the designs or specifications of such product at any time without notice.

Cashco, Inc. does not assume responsibility for the selection, use or maintenance of any product. Responsibility for proper selection, use and maintenance of any Cashco, Inc. product remains solely with the purchaser.

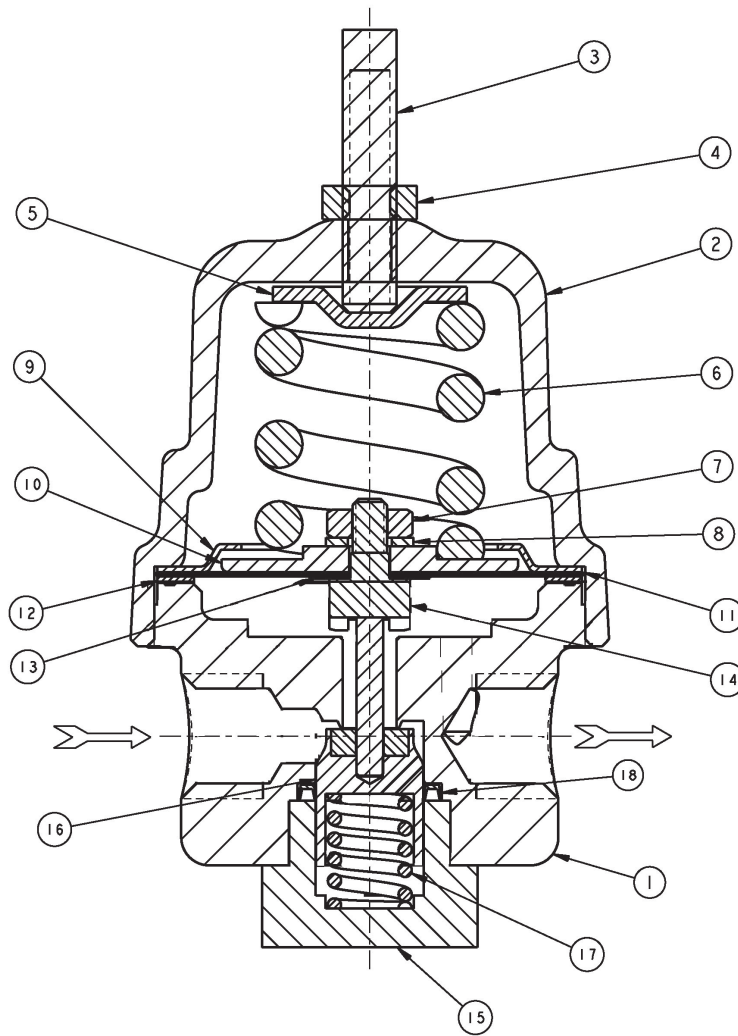


Figure 1

<u>Item No.</u>	<u>Description</u>	<u>Repair Parts Kit B</u>	<u>Item No.</u>	<u>Description</u>	<u>Repair Parts Kit B</u>
1	Body		10	Pressure Plate	
2	Spring Chamber		11	Diaphragms	##
3	Adjusting Screw		12	Diaphragm Gasket	--##
4	Locknut		13	Pusher Plate Gasket	-- ##
5	Spring Button		14	Pusher Plate	-----##
6	Range Spring		15	Body Cap	
7	Pressure Plate Nut		16	Piston	-----##
8	Lock Washer		17	Piston Spring	-----##
9	Diaphragm Stop		18	U-cup Seal	-----##



IOM ADDENDUM:

ATEX DIRECTIVE 2014/34/EU and THE EQUIPMENT AND PROTECTIVE SYSTEMS INTENDED FOR USE IN POTENTIALLY EXPLOSIVE ATMOSPHERES REGULATIONS 2016

Cashco, Inc. declares that the products listed in the table below has been found to comply with the Essential Health and Safety Requirements relating to the design and construction of products intended for use in potentially explosive atmospheres given in Annex II of the ATEX Directive 2014/34/EU and given in Schedule 1 of The Equipment and Protective Systems Indented for Use in Potentially Explosive Atmospheres Regulations 2016. Compliance with the Essential Health and Safety Requirements has been assured by compliance with EN ISO 80079-36:2016 and EN ISO 80079-37:2016. The product will be marked as follows:



The 'X' placed after the technical file number indicates that the product is subject to specific conditions of use as follows:

1. The maximum surface temperature depends entirely on the operating conditions and not the equipment itself. The combination of the maximum ambient and the maximum process medium temperature shall be used to determine the maximum surface temperature and corresponding temperature classification, considering the safety margins described prescribed in EN ISO 80079-36:2016, Clause 8.2. Additionally, the system designer and users must take precautions to prevent rapid system pressurization which may raise the surface temperature of system components and tubing due to adiabatic compression of the system gas. Furthermore, the Joule-Thomson effect may cause process gases to rise in temperature as they expand going through a regulator. This could raise the external surface temperature of the regulator body and the downstream piping creating a potential source of ignition. Whether the Joule-Thomson effect leads to heating or cooling of the process gas depends on the process gas and the inlet and outlet pressures. The system designer is responsible for determining whether the process gas temperature may raise under any operating conditions.
2. Where the process medium is a liquid or semi-solid material with a surface resistance in excess of $1G\Omega$, special precautions shall be taken to ensure the process does not generate electrostatic discharge.
3. Special consideration shall be made regarding the filtration of the process medium if there is a potential for the process medium to contain solid particles. Where particles are present, the process flow shall be $<1\text{m/s}$ ($<3.3\text{ft/s}$) in order to prevent friction between the process medium and internal surfaces.
4. Effective earthing (grounding) of the product shall be ensured during installation.
5. The valve body/housing shall be regularly cleaned to prevent build up of dust deposits.
6. Regulators must be ordered with the non-relieving option (instead of the self-relieving option) if the process gas they are to be used with is hazardous (flammable, toxic, etc.). The self-relieving option vents process gas through the regulator cap directly into the atmosphere while the non-relieving option does not. Using regulators with the self-relieving option in a flammable gas system could create an explosive atmosphere in the vicinity of the regulator.
7. Tied diaphragm regulators with outlet ranges greater than 7 barg (100 psig) should be preset to minimize the risk that improper operation might lead to an outboard leak and a potentially explosive atmosphere.
8. All equipment must only be fitted with manufacturer's original spare parts.
9. Ensure that only non-sparking tools are used, as per EN 1127-1, Annex A.

	PRODUCT
REGULATORS	31-B, 31-N
	1164, 1164(OPT-45)
	1171, 1171(OPT-45), 1171(CRYO)
	2171, 2171(OPT-45), 2171(CRYO), 3171
	1465, 3381, 3381(OPT-45), 3381(OPT-40)
	4381, 4381(OPT-37), 4381(CRYO), 4381(OPT-45), 5381
	MPRV-H, MPRV-L
	PBE, PBE-L, PBE-H
	CA-1, CA-2
	CA1, SA1, CA4, SA4, CA5, SA5
	DA2, DA4, DA5, DA6, DA8
	DA0, DA1, DAP, SAP
	SLR-1, SLR-2, PTR-1
	ALR-1, ULR-1, PGR-1
	BQ, BQ(OPT-45), BQ(CRYO)
	123, 123(CRYO), 123(OPT-45), 123(OPT-46G)
	123-1+6, 123-1+6(OPT-45), 123-1+6(OPT-46G), 123-1+6+S, 123-1+6+S(OPT-40)
	1000HP, 1000HP(OPT-37), 1000HP(OPT-45), 1000HP(OPT-45G), 1000HP(CRYO)
	1000HP-1+6, 1000HP-1+8, 1000LP, 1000LP(OPT-45), 1000LP(OPT-46G)
	6987
	8310HP, 8310HP-1+6, 8310HP-1+8, 8310LP, 8311HP, 8311LP
	345, 345(OPT-45)
	BA1/BL1, PA1/PL1
	C-BPV, C-PRV, C-CS
	D, D(CRYO), D(OPT-37), D(OPT-20), D(OPT-45)
	DL, DL(LCC), DL(OPT-45)
	BR, BR(CRYO)
	HP, HP(LCC), HP(OPT-45), HP(OPT46G), HP-1+6+S(OPT-40), HP-1+6+S
	P1, P2, P3, P4, P5, P7
	B2, B7
	POSR-1, POSR-2
	5200P, 5300P
135	
NW-PL, NW-SO	
CG-PILOT	
FG1	
CONTROL VALVES	RANGER, 987, PREMIER
	964, 521, 988, 988-MB, 989
	2296/2296HF
	SCV-30, SCV-S
TANK BLANKETING	8700, 8910, 8920, 8930, 8940
	2100, 2199
	3100, 3200, 3300, 3400, 3500, 3600, 3700
	1078, 1088, 1100, 1049
	5100, 5200, 5400, 5500
	4100, 4200, 4300, 4400, 4500, 4600
MISC	764P/PD, 764-37, 764T

Cashco, Inc.
P.O. Box 6
Ellsworth, KS 67439-0006
PH (785) 472-4461
Fax. # (785) 472-3539
www.cashco.com
email: sales@cashco.com
Printed in U.S.A. IOM-MPRV-L

Cashco GmbH
Handwerkerstrasse 15
15366 Hoppegarten, Germany
PH +49 3342 30968 0
Fax. No. +49 3342 30968 29
www.cashco.com
email: germany@cashco.com

Cashco do Brasil, Ltda.
Al.Venus, 340
Indaiatuba - Sao Paulo, Brazil
PH +55 11 99677 7177
Fax. No.
www.cashco.com
email: brazil@cashco.com